

Cost: \$10/person
\$5/children ages 12 & under
(Includes continental breakfast, entry to all sessions, trade show, lunch and proceedings.)

Door Prize Drawings:

Early Bird Drawing 10:15 a.m.
(Gift Certificate for 2 tickets to the Chanhassen Dinner Theater)
sponsored by Waconia Farm & Home

Final Drawings 3:15 p.m.
Grand Prize Drawing
(Weekend Getaway - 2-night hotel package and \$100 spending money)

Ladies Drawing—manicure & pedicure package
Both final drawings sponsored by Expo Planning Committee

Map:
Central High School
531 Morse Street
Norwood Young America



If you are interested in displaying a booth and/or being a sponsor contact Russ at 952-240-4336, Mary or Cindi at 952-466-5300.

PRSRT STD
US Postage Paid
Permit No. 1
Chaska MN



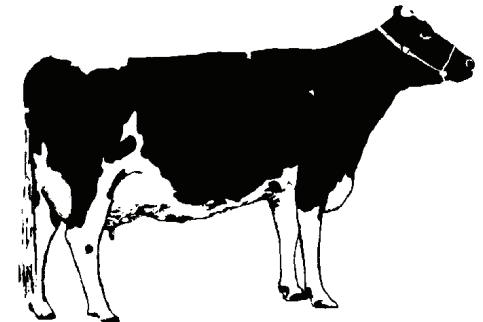
Carver County
11360 Hwy 212 Suite 4
Cologne Mn 55322-8019

Thank you to MDI for being a major sponsor for this event.

UNIVERSITY OF MINNESOTA
EXTENSION

**17th Annual
Carver County/
U of M
Dairy Expo &
Trade Show**

**Monday,
February 16, 2009**



**Central High School
Norwood Young America, MN**

A seminar and trade show for dairy producers and related industries

Carver County/U of MN Dairy Expo & Trade Show

Monday, February 16, 2009

Schedule of Events

9:30 a.m. Registration, Continental Breakfast & Trade Show

10:15 a.m. Early Bird Drawing & Trade Show

SESSION A

SESSION B

SESSION C

10:30

Keys to Reproductive Success

Funk's Midway Dairy—Melrose, MN
Kraig Krienke—Lester Prairie, MN
Sauter Dairy—Cannon Falls, MN

"What Works For Us" - Panel members will address the keys to reproductive success in their operation.

Maximizing the Economic Benefits of Manure

Dr. Jose Hernandez
Univ. of Minnesota Extension

We will discuss current agronomic, economic and environmental aspects of manure and nutrition management. We will also demonstrate the use of a computer program to readily determine the value of manure under a range of application rates, methods and fertilizer price regimens.

Moderate Energy Diets for Dry Cows

Dr. Noah Litherland
Univ. of Minnesota Extension

The importance of dry cow feeding strategies are often overlooked. Learn more about forage options for dry cows, feed additives, and feeding management to promote a healthy transition into early lactation.

11:30

Old McDonald Had A Farm: How Agricultural Stereotypes Drive America's Food Supply

Cris Peterson, Four Cubs Farm, Grantsburg, WI

E-I-E-I-O! Children's author and dairy farmer Cris Peterson feels like screaming that refrain instead of singing it when a modern farmer is characterized as a hayseed too dumb to read a pesticide label but pretty cute milking cows by hand and plowing his fields with a horse. That's not who's producing America's food, but you wouldn't know it by reading most mainstream articles on farming. American farmers manage to produce enough food and fiber to meet the needs of the U.S. and export huge quantities to countries around the world and yet are still portrayed in the media as overall-clad bumpkins feeding the chickens and chugging along on little red tractors. Peterson will identify some of the agricultural stereotypes prevalent in today's media and help participants develop ways to show agriculture in a realistic light.

12:15

LUNCH & TRADE SHOW

2:15

Using Genomic Predictions as a Breeding Tool

Dr. Tom Lawlor
Holstein Association USA

Tom will discuss the latest research relating to genomic testing and how it relates to today's dairy operation.

Business Planning in Today's Economic Turmoil

Gary Sipiorski
Vita Plus Corporation

Gary will discuss how the present financial factors will affect the business side of the dairy business in your barnyard. He will give you suggestions of how to be proactive on the dairy producers end.

Moderate Energy Diets for Dry Cows

Dr. Noah Litherland,
Univ. of Minnesota Extension

REPEATED

3:00 p.m. Trade Show

3:15 p.m. Door Prize Drawings