

Cost: \$10/person

\$5/children ages 12 & under

(Includes continental breakfast, entry to all sessions, trade show, lunch and proceedings.)

Door Prize Drawings:

Early Bird Drawing 10:15 a.m.

(Gift Certificate for 2 tickets to the Chanhassen Dinner Theater)

sponsored by Waconia Farm & Home

Final Drawings 3:15 p.m.

Grand Prize Drawing

(Weekend Getaway - 2-night hotel package and \$100 spending money)

Ladies Drawing—1 hr massage

Both final drawings sponsored by Carver County Dairy Core Team

Map:

Central High School
531 Morse Street
Norwood Young America



If you are interested in displaying a booth and/or being a sponsor contact Russ at 952-240-4336, Mary or Cindi at 952-466-5300.

NON PROFIT ORG.
PRSR STD
Postage & Fee Paid
U of MN EXTENSION
SERVICE
Permit No. G-268

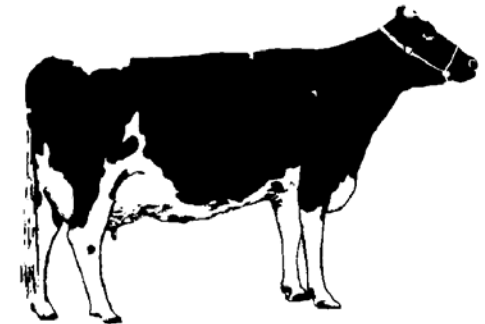
UNIVERSITY OF MINNESOTA
Extension
SERVICE

Carver County
11360 Hwy 212 Suite 4
Cologne Mn 55322-8019

UNIVERSITY OF MINNESOTA
Extension
SERVICE

**15th Annual
Carver County/
U of M
Dairy Expo**

**Monday,
February 19, 2007**



**Central High School
Norwood Young America, MN**

A seminar and trade show for dairy producers and related industries

**Carver County/University of Minnesota Dairy Expo
Monday, February 19, 2007**

Schedule of Events

9:30 a.m. Registration, Continental Breakfast & Booth Browsing

10:15 a.m. Early Bird Drawing & Booth Browsing

SESSION A

SESSION B

SESSION C

10:30

Monitoring Fresh Cows

Dr. Jerry Olson, Pfizer Animal Health

Discussion on key parameters to monitor when evaluating fresh cows, combining record analysis with cow observations.

Reproductive Challenges of High Producing Cows

Dr. Paul Fricke, UW Madison

Five reproductive bottlenecks for high producing dairy cows will be discussed including: poor detection and expression of heats, non-cycling cows, poor conception rates, pregnancy loss for cows that do conceive, and multiple ovulations and twinning.

Matching Forages to Alternative Feeds

Jim Paulson, U of MN Extension

Discussion of alternative strategies for forage production with higher corn prices and the inclusion of increasing levels of by-products into dairy cattle rations.

11:30

**Experience With Labor Management
Producer Panel**

Hear first hand from a panel of producers about how they have been successful in dealing with labor management. Participants will include:

- Wolf Creek Dairy, Paul & Barb Liebenstein, Dundas MN
- Carlson Dairy, Chad & Carl Carlson, Pennock MN
- Jon-De Farms, Dean, Todd & Liz Doornink, Baldwin WI

Speak Out! on Behalf of Your Product & Your Industry

Sherry Newell, Midwest Dairy Assoc

Midwest Dairy Association provides background on the "People Behind the Product" check-off initiative. Learn winning words and strategies for communicating with your consumer showcase the value of the dairy industry in Minnesota.

12:15

LUNCH & BOOTH BROWSING

2:15

Monitoring Fresh Cows

Dr. Jerry Olson, Pfizer Animal Health

REPEATED

Reproductive Challenges of High Producing Cows

Dr. Paul Fricke, UW Madison

REPEATED

Matching Forages to Alternative Feeds

Jim Paulson, U of MN Extension

REPEATED

3:00 p.m. Booth Browsing

3:15 p.m. Door Prize Drawings